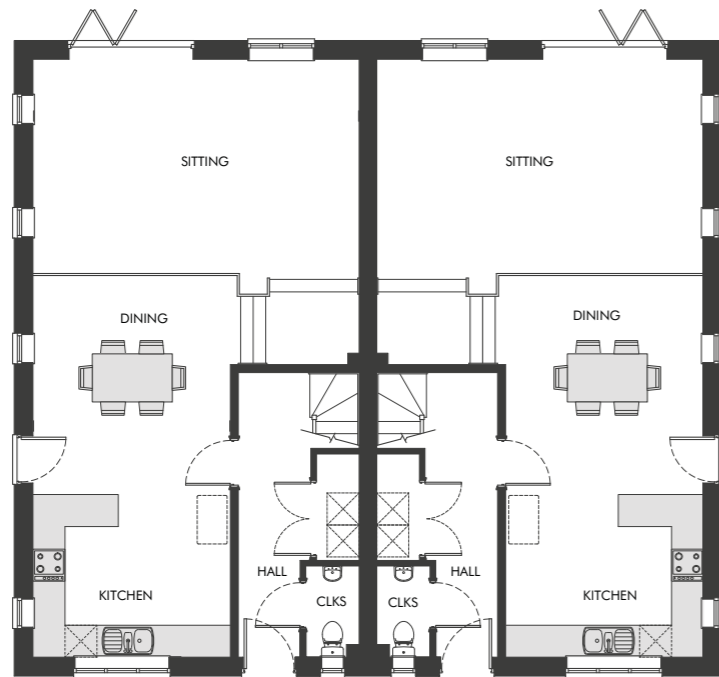


Plots 4 & 5

Semi-detached | 4 bedrooms | 3 bathrooms | Off-street parking | Outbuilding

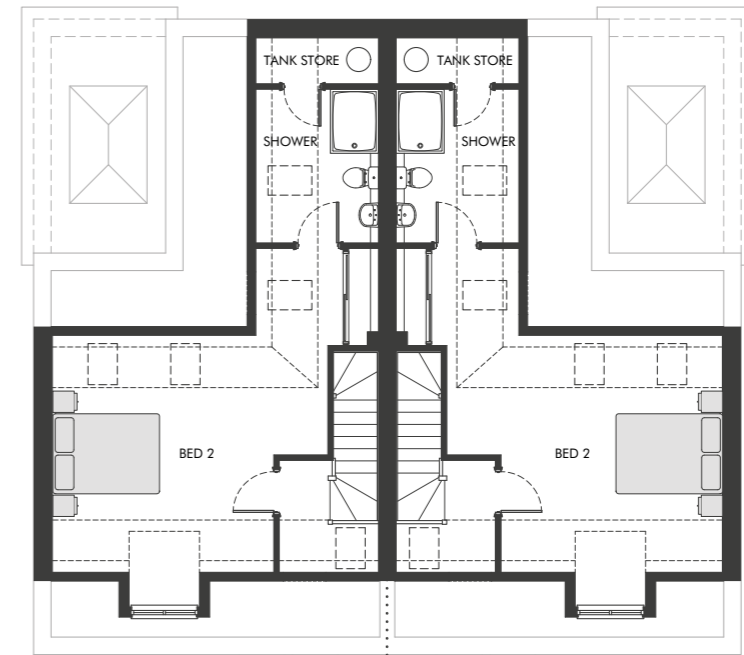
Perfect for the growing family, these exceptional four bedroom homes are designed over three floors. The carefully considered split levels between the open plan dining and living space are flooded with light and give a lovely contemporary feel, complemented by the bi-fold doors opening onto the terrace and garden. The master and second floor bedrooms benefit from an en suite and dressing area, whilst the family bathroom serves two further double bedrooms on the first floor.

GROUND FLOOR		FIRST FLOOR		SECOND FLOOR		TOTAL INTERNAL AREA 163.4 m ² (1,758 ft ²)
Room		Room		Room		
Sitting	6.09 x 4 m 20' x 13'1" ft	Bedroom 1	3.62 x 3.27 m 11'11" x 10'9" ft	Bedroom 2	5.14 x 4.42 m 16'11" x 14'6" ft	
Dining/Kitchen	3.68 x 7.14 m 12'1" x 23'5" ft	Bedroom 3	3.81 x 3.04 m 12'6" x 10' ft			
		Bedroom 4	3.01 x 3.64 m 9'11" x 11'11" ft			



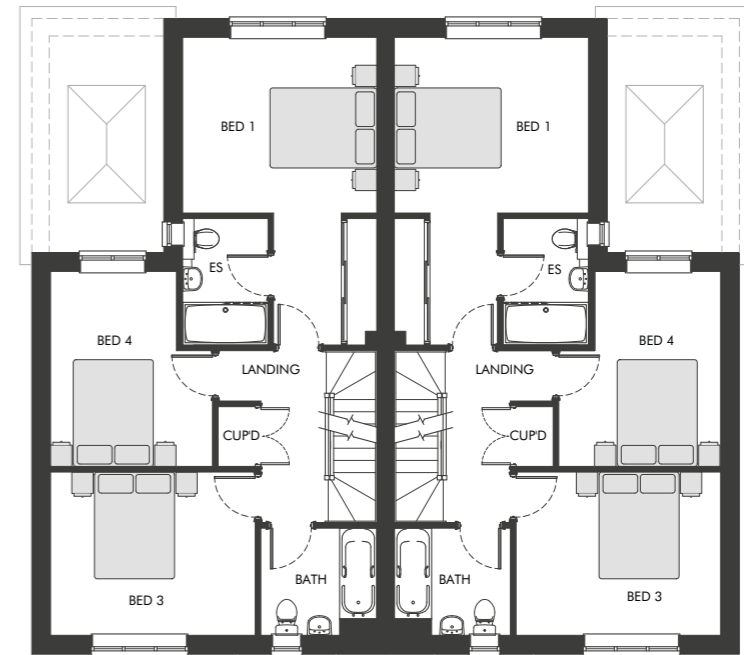
PLOT 4 | PLOT 5

GROUND FLOOR



PLOT 4 | PLOT 5

SECOND FLOOR



PLOT 4 | PLOT 5

FIRST FLOOR