

# Plot 3

Detached | 4 bedrooms | 2 bathrooms | Off-street parking | Outbuilding

A beautiful home which benefits from a lovely spacious feel. Bi-fold doors from the kitchen/dining room open on to the terrace and garden – perfect for entertaining – as is the sitting room with its central fireplace. The master bedroom has a wet room-style en suite, whilst the family bathroom serves the further three bedrooms, each with the convenience of fitted wardrobes.

## GROUND FLOOR

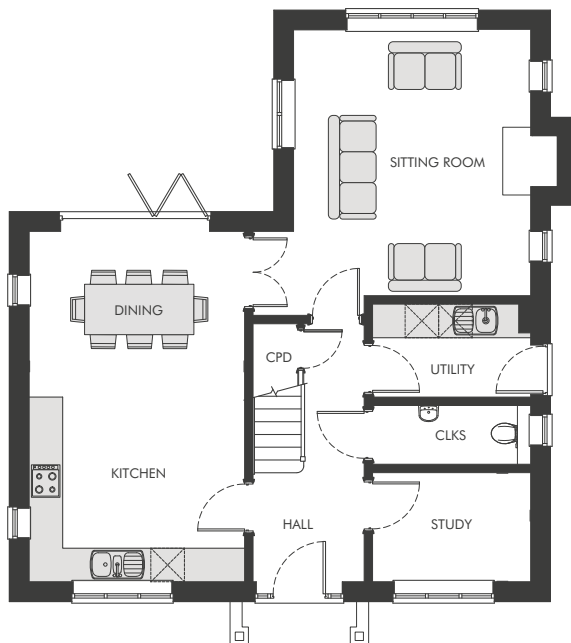
Room	
Dining/Kitchen	3.83 x 6.24 m 12'7" x 20'6" ft
Sitting	4.22 x 4.73 m 3'10" x 15'6" ft
Study	2.81 x 1.93 m 9'2" x 6'4" ft

## FIRST FLOOR

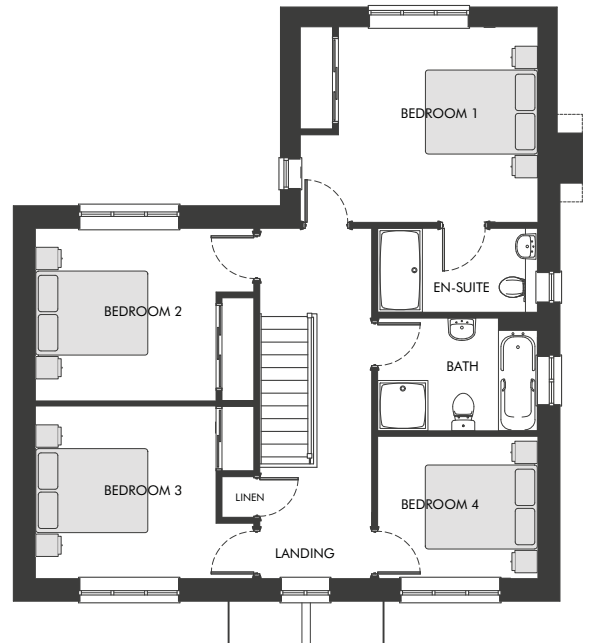
Room	
Bedroom 1	4.22 x 3.47 m 13'10" x 11'5" ft
Bedroom 2	3.87 x 3.06 m 12'9" x 10' ft
Bedroom 3	3.2 x 3.06 m 10'6" x 10' ft
Bedroom 4	2.84 x 2.52 m 9'4" x 8'3" ft

## TOTAL INTERNAL AREA

147.2 m<sup>2</sup> (1,532 ft<sup>2</sup>)



GROUND FLOOR



FIRST FLOOR