

Plots 1 & 2

Semi-detached | 2 bedrooms | 2 bathrooms | Off-street parking | Outbuilding

These delightful cottage-style homes are positioned at the front of the development and are the only two bedroom homes available at Kiln Gardens. Each benefit from an open plan kitchen/dining room which opens on to the terrace and enclosed garden. Both bedrooms are generously proportioned, one with an en suite and a separate family bathroom.

GROUND FLOOR

Room

Dining/Kitchen	4.52 x 2.8 m 14'10" x 9'2" ft
Sitting	4.52 x 3.73 m 14'10" x 12'3" ft

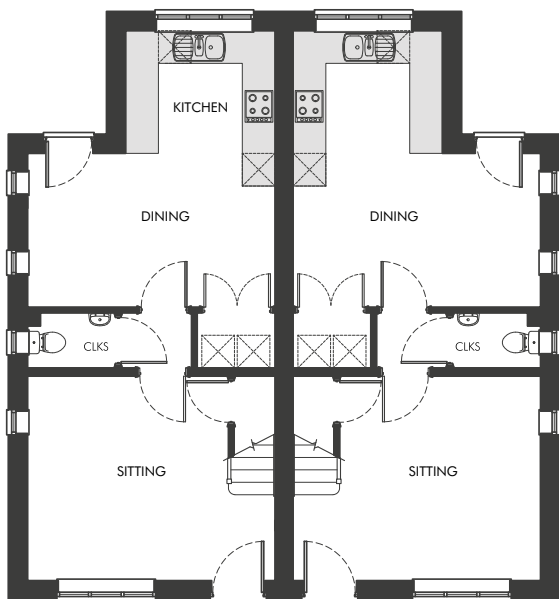
FIRST FLOOR

Room

Bedroom 1	2.72 x 3.91 m 8'11" x 12'10" ft
Bedroom 2	3.85 x 2.98 m 12'8" x 9'9" ft

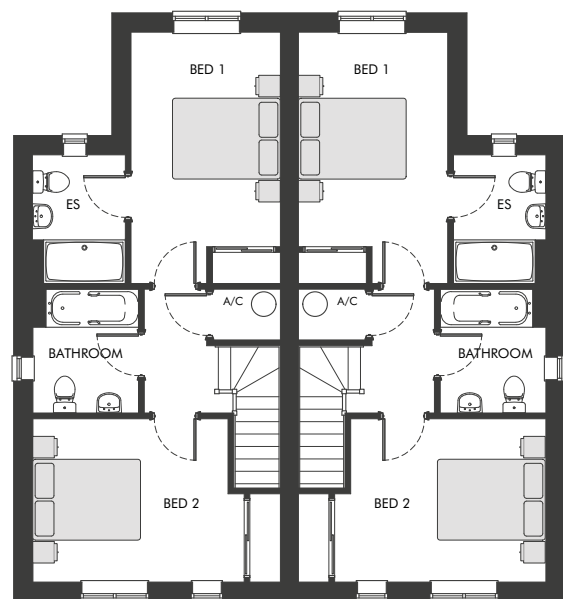
TOTAL INTERNAL AREA

83.4 m² (897 ft²)



PLOT 1 PLOT 2

GROUND FLOOR



PLOT 1 PLOT 2

FIRST FLOOR