

Plot 18

Detached | 5 bedrooms | 4 bathrooms | Off-street parking | Garage store

A beautifully proportioned double fronted family house which is located at the entrance to Kiln Gardens. The entrance hallway leads in to the sitting room with central fireplace and spacious open plan kitchen/dining room with full width bi-fold doors providing perfect entertaining space, inside and out. The master en suite, with luxurious freestanding bath, is one of four bathrooms serving the five bedrooms over two floors and all of the double bedrooms benefit from the convenience of fitted wardrobes.

GROUND FLOOR

Room	Dimensions
Dining/ Kitchen	4.4 x 6.47 m 14'5" x 21'3" ft
Sitting	4.44 x 4.99 m 14'7" x 16'4" ft
Study	3.03 x 2.08 m 9'11" x 6'10" ft

FIRST FLOOR

Room	Dimensions
Bedroom 1	4.04 x 3.49 m 13'3" x 11'5" ft
Bedroom 2	3.78 x 3.06 m 12'5" x 10' ft
Bedroom 3	4.44 x 2.85 m 14'7" x 9'4" ft
Bedroom 4	3.29 x 2.12 m 10'10" x 7' ft

SECOND FLOOR

Room	Dimensions
Bedroom 5	4.44 x 4.24 m 14'7" x 13'11" ft
Office	2.62 x 3.21 m 8'7" x 10'6" ft

TOTAL INTERNAL AREA

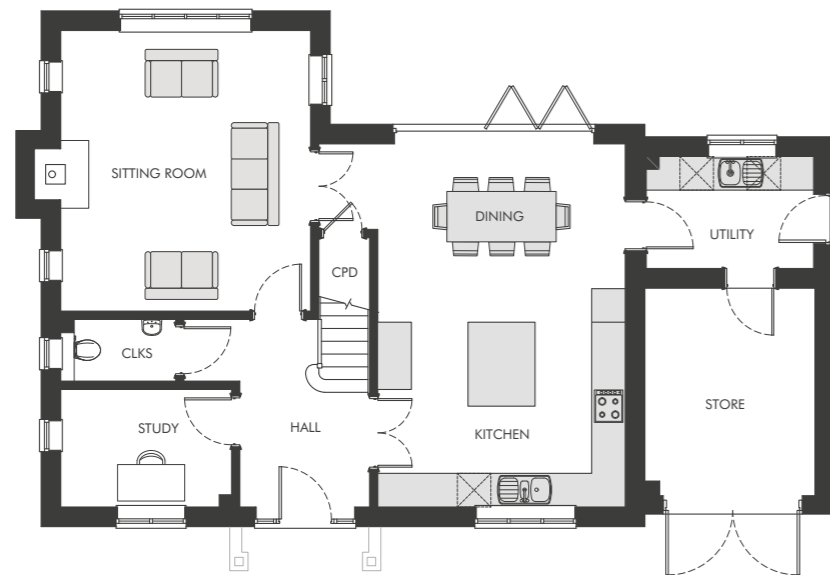
203.68 m² (2,192 ft²)

STORE FLOOR AREA

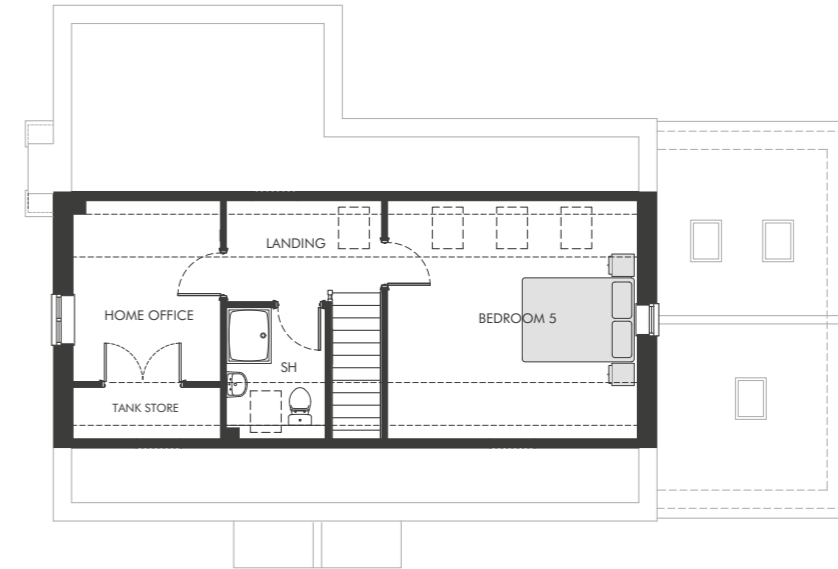
11.2 m² (120 ft²)

TOTAL AREA

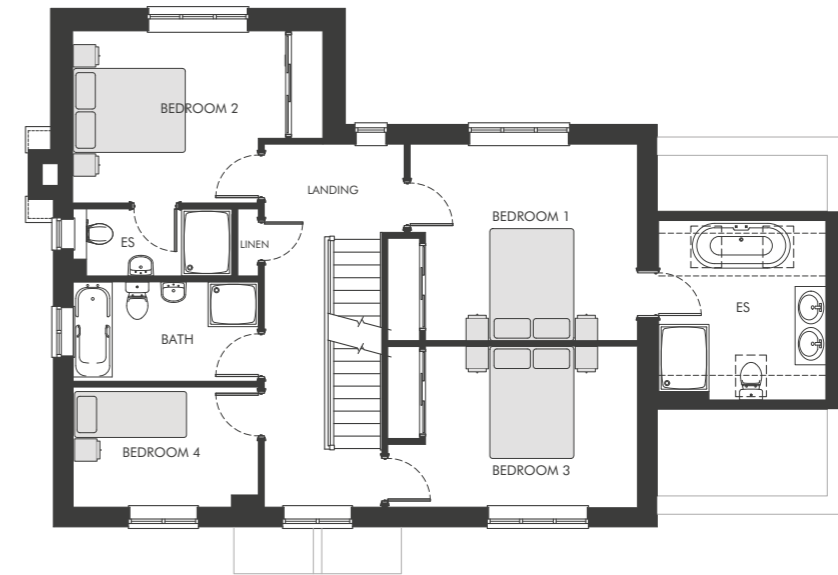
214.88 m² (2,312 ft²)



GROUND FLOOR



SECOND FLOOR



FIRST FLOOR