

Plots 16 & 17

Detached | 5 bedrooms | 3 bathrooms | Off-street parking | Garage

These two five bedroom family houses each offer a similar internal layout and benefit from a lovely spacious feel. Bi-fold doors from the large versatile kitchen/dining room open on to the terrace and garden. Double doors provide access into the generously sized sitting room with its central fireplace. The master bedroom has a wet room-style en suite, whilst the family bathroom serves the three bedrooms to the first floor, with a further double bedroom and shower room to the second floor.

GROUND FLOOR

Room	Dimensions
Dining/Kitchen	3.72 x 6.47 m 12'3" x 21'3" ft
Sitting	4.44 x 4.96 m 14'7" x 16'3" ft
Study	3.03 x 1.93 m 9'11" x 6'4" ft

FIRST FLOOR

Room	Dimensions
Bedroom 1	4.44 x 3.47 m 14'7" x 11'5" ft
Bedroom 2	3.37 x 3.17 m 11'1" x 10'5" ft
Bedroom 3	3.77 x 3.17 m 12'4" x 10'5" ft
Bedroom 4	3.29 x 2.66 m 10'10" x 8'9" ft

SECOND FLOOR

Room	Dimensions
Bedroom 5	3.77 x 4.24 m 12'4" x 13'11" ft
Office	2.62 x 3.31 m 8'7" x 10'10" ft

TOTAL INTERNAL AREA

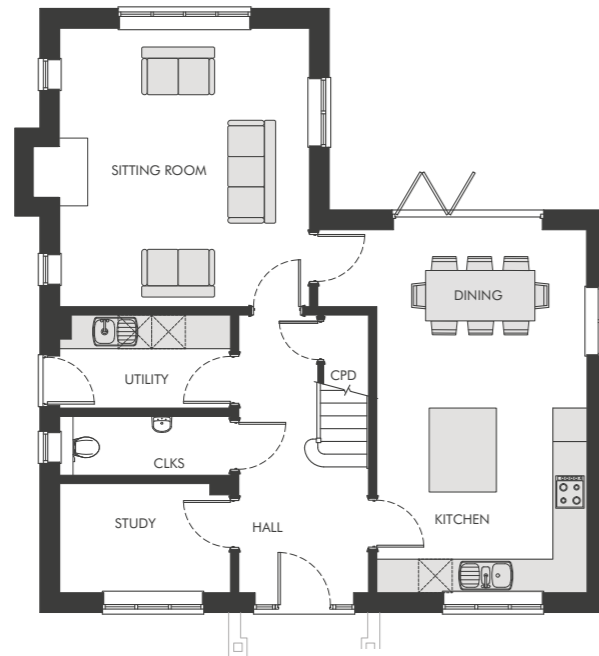
189.67 m² (2,041 ft²)

GARAGE

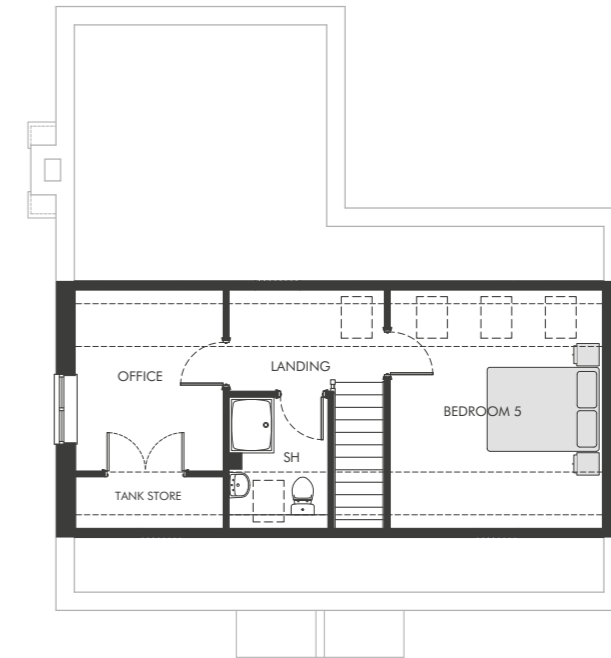
20.4 m² (219 ft²)

TOTAL

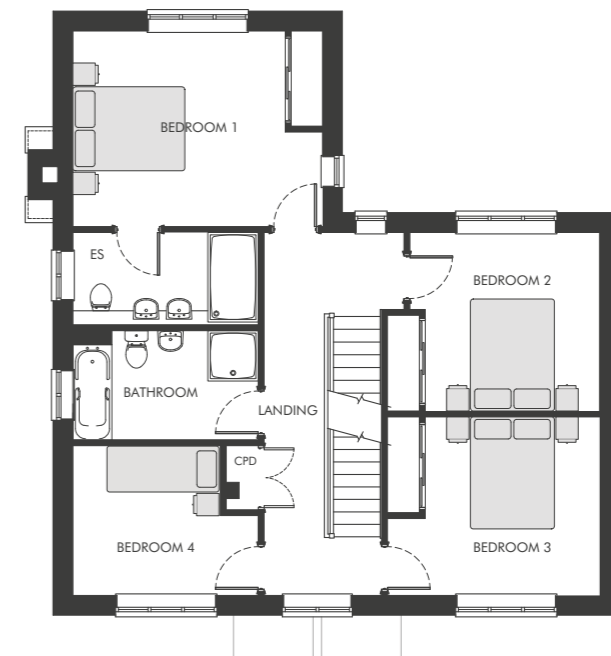
210.07 m² (2,260 ft²)



GROUND FLOOR



SECOND FLOOR



FIRST FLOOR