

Plot 15

Detached | 4/5 bedrooms | 3 bathrooms | Off-street parking | Garage

This large family house boasts a sizeable study, sitting room with fireplace, and full width bi-fold doors which open from two sides of the open plan kitchen/dining room onto the terrace and garden. These, combined with a roof lantern over the dining area, flood the space with natural light providing a truly airy and spacious feel. All bedrooms are generously proportioned and the master bedroom, overlooking the garden, has a generous en suite and dressing area.

GROUND FLOOR

Room	Dimensions
Dining/Kitchen	5.34 x 7.22 m 17'6" x 23'8" ft
Sitting	3.88 x 5.04 m 12'9" x 16'6" ft

FIRST FLOOR

Room	Dimensions
Bedroom 1	4.33 x 3.66 m 14'3" x 12' ft
Bedroom 2	4.22 x 3.47 m 13'10" x 11'4" ft
Bedroom 3	2.91 x 3.25 m 9'6" x 10'8" ft

SECOND FLOOR

Room	Dimensions
Bedroom 4	3.92 x 4.01 m 12'11" x 13'2" ft
Office	2.46 x 2.99 m 8'1" x 9'10" ft

TOTAL INTERNAL AREA

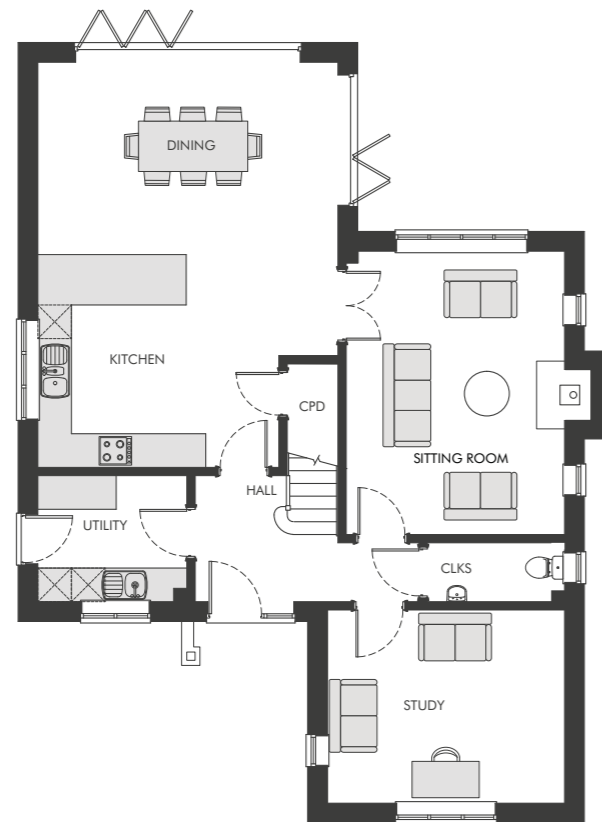
200.53 m² (2,158 ft²)

GARAGE

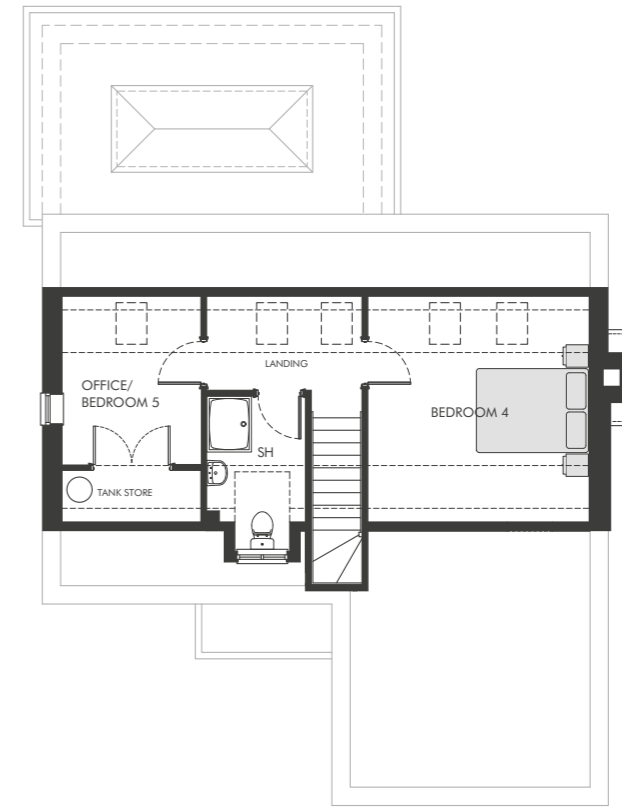
20.4 m² (219 ft²)

TOTAL

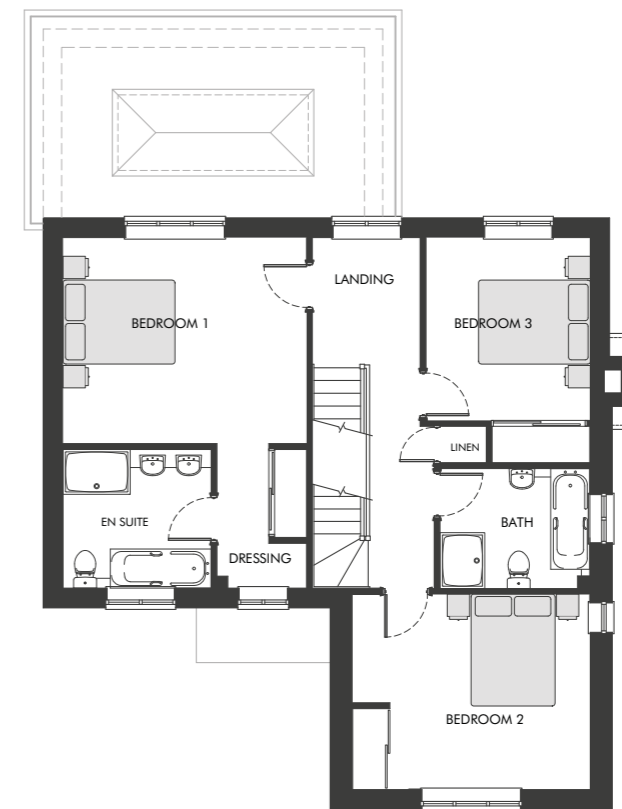
220.93 m² (2,377 ft²)



GROUND FLOOR



SECOND FLOOR



FIRST FLOOR