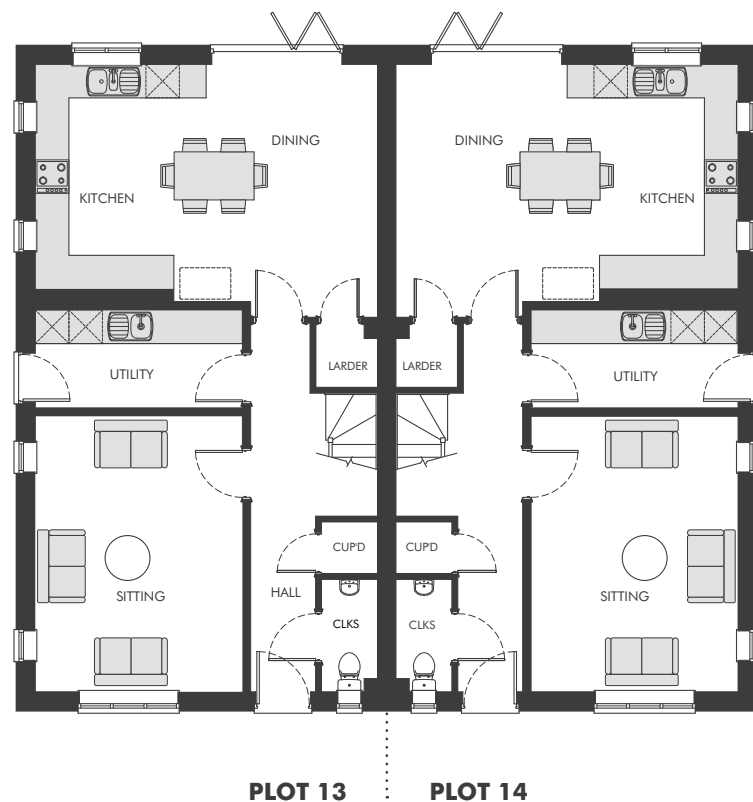


Plots 13 & 14

Semi-detached | 4 bedrooms | 3 bathrooms | Off-street parking | Outbuilding

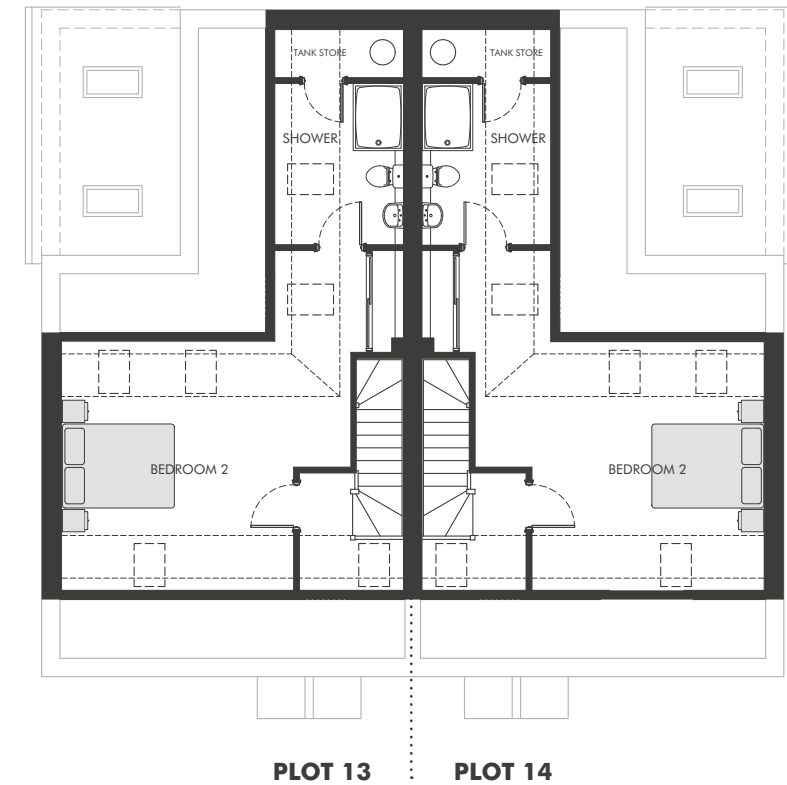
The ground floor layout marks the key difference to plots 4 & 5 in these four double bedroom homes. The sitting room is positioned to the front of the house, with the versatile open plan kitchen/dining room's bi-fold doors opening on to the south facing terrace and garden with woodland beyond.

GROUND FLOOR		FIRST FLOOR		SECOND FLOOR		TOTAL INTERNAL AREA 162.3 m ² (1,746 ft ²)
Room		Room		Room		
Dining/Kitchen	6.09 x 4 m 20' x 13'1" ft	Bedroom 1	3.62 x 3.27 m 11'11" x 10'9" ft	Bedroom 2	5.14 x 4.42 m 16'11" x 14'6" ft	
Sitting	3.68 x 4.9 m 12'1" x 16'1" ft	Bedroom 3	3.81 x 3.04 m 12'6" x 10' ft			
		Bedroom 4	3.01 x 3.64 m 9'11" x 11'11" ft			



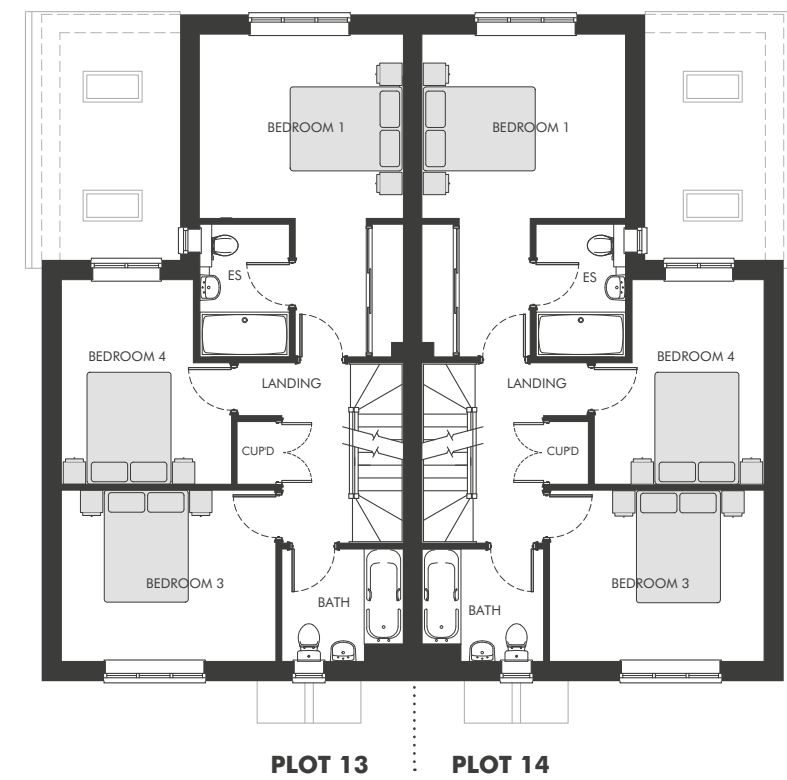
PLOT 13 | PLOT 14

GROUND FLOOR



PLOT 13 | PLOT 14

SECOND FLOOR



PLOT 13 | PLOT 14

FIRST FLOOR